

A WATER MANAGEMENT SOLUTION

WATER TRANSFER JOB HELPED REDUCE LABOR BY 40%

Safe & Reliable Lay-Flat Hose Transfers 50,000 Barrels of Water Per Day



WATER TRANSFER ACROSS A SENSITIVE HABITAT

A TETRA customer in the Permian Midland Basin sought an environmentally safe and efficient means of produced-water transfer across an expansive pad site. Because the land contained livestock and other species of wildlife, safeguarding the habitat was an overriding concern. Adding to the challenge was working in the very high summer heat with temperatures around 100°F (38°C).

AUTOMATION AND LAY-FLAT HOSE

TETRA began the project by first automating the operator's water management with the TETRA BlueLinX automated control system. BlueLinX improved operational efficiency by better controlling the pumps to reduce their fuel consumption.

Next, to safely transfer the large volumes of produced water across the site surface, workers installed a total of 13 miles of TETRA Steel lay-flat hose, it being one of only two piping products the landowner allowed on its property.

Once up and running, the TETRA water management solution transferred 50,000 barrels per day, with improved pump efficiency and no environmental incidents. Moreover, the automation and safe water transfer yielded a 40% reduction in onsite headcount, from seven to four people per shift. Fewer personnel mean lower costs and fewer vehicles on the road traveling to and from the job site.

The customer was so pleased with the success and value of the job, that they awarded TETRA additional work for flowback and sand management. The landowner, too, was pleased with the safety and environmental soundness of the operation.

An operator sought a more efficient and reliable means of water transfer at an expansive pad site located on a cattle and horse ranch. TETRA automated the water management and installed 13 miles of TETRA Steel lay-flat hose that ultimately transferred 50,000 barrels of water per day.

CHALLENGE

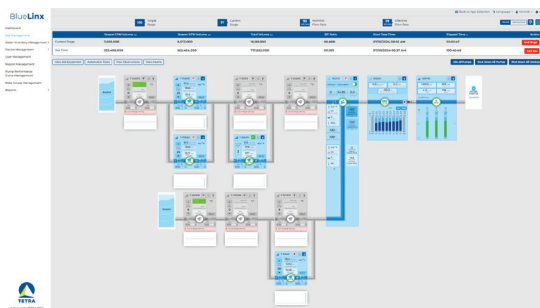
- ▶ Safely transfer large volumes of produced water across a pad site
- ▶ Ensure no environmental or safety incidents
- ▶ Work in exceptionally high summer temperatures around 100°F (38°C)

SOLUTION

- ▶ TETRA BlueLinX automated control system
- ▶ TETRA Steel lay-flat hose totaling 13 miles

RESULTS

- ▶ Safely transferred 50,000 barrels of produced water per day without any incidents
- ▶ Safeguarded the environment and its animal life
- ▶ Reduced onsite headcount 40%, from 7 to 4 people per shift



The dashboard of the TETRA BlueLinX automated control system provides technicians with real-time monitoring and control of pump operations and water-transfer flowrate.

Contact us to learn more at: www.onetetra.com

Because use conditions and applicable laws may differ from one location to another and may change with time, Customer is responsible for determining whether products and the information in this document are appropriate for Customer's use and for ensuring that Customer's workplace and disposal practices are in compliance with applicable laws and other governmental enactments. Seller assumes no obligation or liability for the information in this document. NO WARRANTIES ARE GIVEN; ALL IMPLIED WARRANTIES OF MERCHANTABILITY OR FITNESS FOR A PARTICULAR PURPOSE ARE EXPRESSLY EXCLUDED. Further, nothing contained herein shall be taken as a recommendation to manufacture or use any of the herein described materials or processes in violation of existing or future patents.

